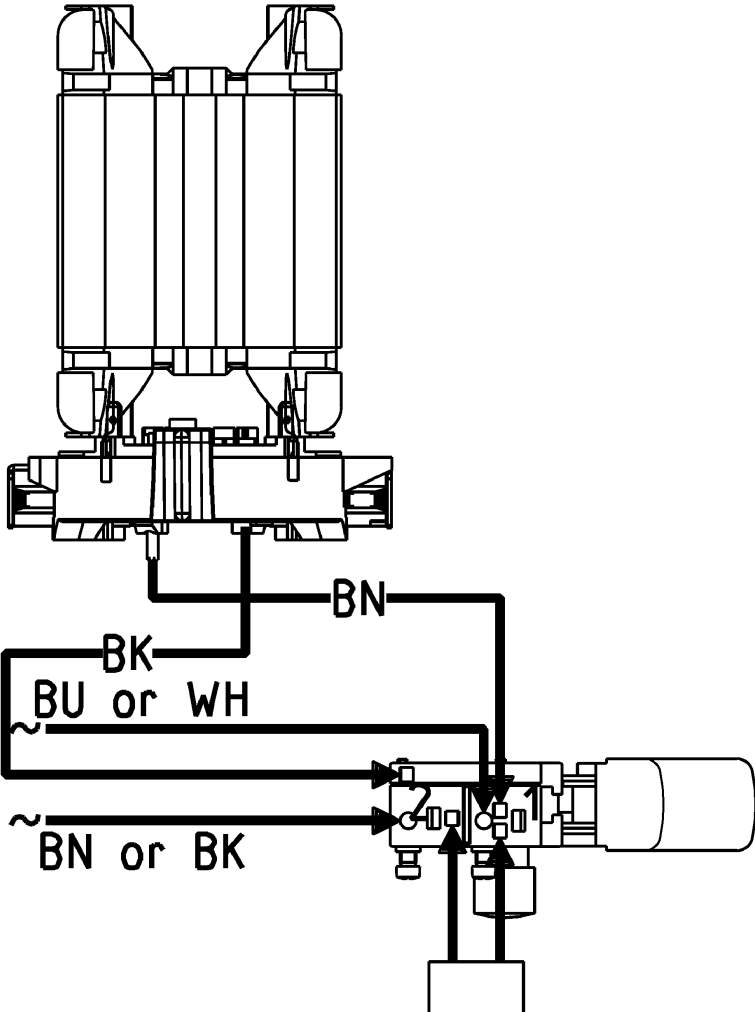


Position	Amount	Type number	Description	PG
1	1	341701940	Cheese-head screw	12
2	1	141181680	Retaining ring	11
3	1	341603640	Drill spindle	28
4	2	339006750	Ring	11
5	3	141122490	Self-tap. fill. h. screw	12
6	1	316035300	Gear housing cpl.	33
7	1	343378830	Cover with seal	14
8	1	341540010	Guide bolt	16
9	1	340004010	Sliding block	20
10	1	339129270	Shift fork	12
11	1	316030370	Intermediate gear	34
12	1	344095910	SEAL	12
13	1	316031000	Gear flange cpl.	34
14	1	344095920	Rubber buffer	11
15	1	339210830	Shaft sealing ring	13
16	1	143110220	BALL BEARING, 15x32x9	26
17	1	341055650	Slotted disc	15
18	1	141155810	Ring	11
19	1	316029530	Control knob cpl.	14
21	1	314000630	Supporting handle cpl.	25
22	1	338043750	Rating plate	12
23	1	343374280	Cover w.o. electronic	18
24	1	343406870	Electronic switch with dial	30
25	5	141117060	Self-tap. fill. h. screw	12
26	1	343393020	Pistol grip 2 piece	20
27	2	344092220	Rubber plug	11
28	1	343362490	Cable clip	12
29	1	343376040	Sealing ring	12
30	1	143115800	Ball bearing, 8x22x7	13
31	1	310007830	Armature cpl.230V	43
32	1	143115660	Ball bearing, 6x19x6	13
33	1	343374270	Intermediate flange	18
34	1	143192430	O-ring	12
35	2	141118260	Self-tap. fill. h. screw	11
36	1	311009800	Field coil 230V	26
37	1	315012650	Motor housing	24
38	1	338122160	M-Label,08 52x22	11
39	1	399999990	Part not needed	
40	2	338115410	Indication label	11
41	1	316028100	Brush holder module	27
42	1	316034550	Brush set 230V/120V	25
43	1	343253780	Interference suppr. cond.	16
44	1	344493180	Cable with plug	27
46	1	344101160	Cable sleeve	13
47	1	316035730	Fan w. prot. Grid	18
882	1	344130970	Grease 50Gr 1,8oz	22
1001	1	338504130	Diagram	



Circuit Block Diagram

