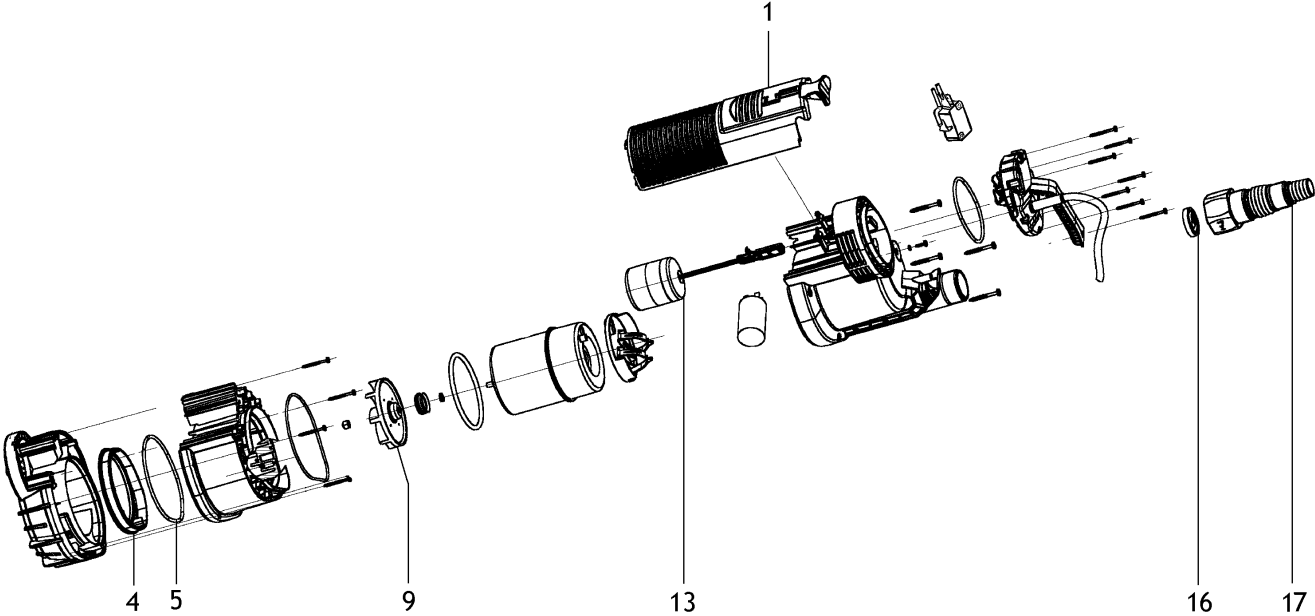


| | Litzenfarben | Colour of strands | Couleur des cordons |
|------|--------------|-------------------|---------------------|
| BK | schwarz | black | noir |
| WH | weiß | white | blanc |
| BU | blau | blue | bleu |
| YE | gelb | yellow | jaune |
| RD | rot | red | rouge |
| TR | transparent | transparent | transparent |
| BN | braun | brown | brun |
| GY | grau | grey | gris |
| GNYE | grün-gelb | green-yellow | vert-jaune |
| BKWH | schwarz-weiß | black-white | noir-blanc |
| GN | grün | green | vert |
| OG | orange | orange | orange |
| VT | violett | violet | violet |
| TQ | türkis | turquoise | turquoise |

| | Bedeutung der Kurzzeichen | Meaning of the symbols | Interprétation des symboles |
|---|---------------------------|-------------------------------------|-----------------------------|
| B | Stecker | plug | fiche |
| C | Kondensator | condenser | condensateur |
| D | Funkentstördrossel | interference suppression inductance | inductance d'antiparasitage |
| E | Elektronik-Baustein | electronic unit | unité électronique |
| I | Induktionsspule | induction coil | bobine d'inductance |
| K | Klemme | terminal | borne |
| L | Licht | light | lumière |
| M | Motor | motor | moteur |
| O | Überlastschutz | overload cut-out | déclencheur de surintensité |
| R | Drehrichtungsumschalter | reversing switch | commutateur droite-gauche |
| S | Schalter | switch | interrupteur |
| U | Umschalter | change-over switch | commutateur |
| X | Elektronik-Element | electronic element | élément électronique |



| Pozícia | Počet | Typové číslo | Označenie | PG |
|---------|-------|--------------|---------------------------------------|----|
| 1 | 1 | 1341697774 | DECKEL SCHWIMMERGEHAEUSE TP 12000 SI | 26 |
| 4 | 1 | 1341697936 | HALTERING TP 7500/12000 SI | 17 |
| 5 | 1 | 7632697923 | O-RING 101,27 X 2,62 | 13 |
| 9 | 1 | 1349697870 | LAUFRAD TP 12000 SI | 19 |
| 13 | 1 | 1341697812 | SCHWIMMER KPL. TP 12000 SI | 28 |
| 16 | 1 | 7831718964 | RUECKSCHLAGVENTIL | 20 |
| 17 | 1 | 0903061677 | Multiadapter 1 1/4" 11/4"DOPPELN-11/4 | |